



radiustrack®

THE ART AND SCIENCE OF SIMPLIFYING THE CURVE

QUALIFICATIONS SUBMITTAL

Spiritual Facilities

Radius Track Corporation

www.radiustrack.com • 888.872.3487 • info@radiustrack.com

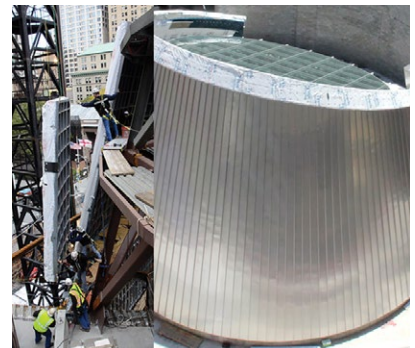
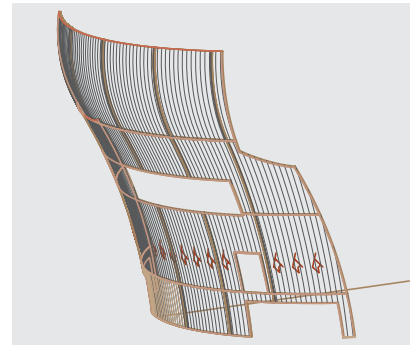
OVERVIEW

With decades of experience and tens of thousands of successfully completed projects, Radius Track Corporation pioneered pre-curved cold-formed steel (CFS) framing solutions. Our expertise stems from breakthrough non-structural and structural framing technology that frees architects to design and contractors to execute curved and complex surfaces with efficiency and precision.

Since the first patented invention, Radius Track® expanded manufacturing capabilities to join a custom-designed Computer Numeric Controlled Bending (CNCB) system with large machines to automatically fabricate custom formed framing profiles. Much more than a manufacturer of precision CFS framing, Radius Track® understands architecture, interior design, BIM, and framing. Our design team works with architects, engineers, construction managers, and contractors to translate design intent into constructible framing solutions through 3D modeling, data management, coordination, and CNC fabrication. Our solutions are grouped into four categories:

- **Design Assist BIM/3D Modeling**
- **Curved-Right® Custom Framing**
- **Unitized Framing Solutions**

Radius Track is a privately owned and operated corporation dedicated to providing constructible solutions for innovative designs using teamwork, coordination, technology, and experience. Whether we are working with you to design framing for a doubly curved feature wall, a grand dome with inset windows, a truncated conical unitized façade supporting an oculus, or furring for a curved wall, our goal is to provide a framing solution to meet the design intent and project specifications on time, within budget.





St George - Interior

Fishers, IN • Architect: CJK Design Group



St George - Exterior

Fishers, IN • Architect: CJK Design Group



Turkish American Community Center

Lanham, MD • Architect: Fentress Architects



St. Andrew Orthodox Christian Church

Riverside, CA • Architect: CJK Design Group



Interfaith Peace Chapel, Cathedral of Hope

Dallas, TX • Architect: Philip Johnson

Awards

- 2011 Architectural Products Product Innovation Award Winner
- 2011 Outstanding Construction Award by AGC-Texas Building Branch

St. George Orthodox
Christian Church -
Interior Domes
Fishers, IN



Top and bottom left images
by David Muck



Iconography on Interior Domes and Vaults at St. George

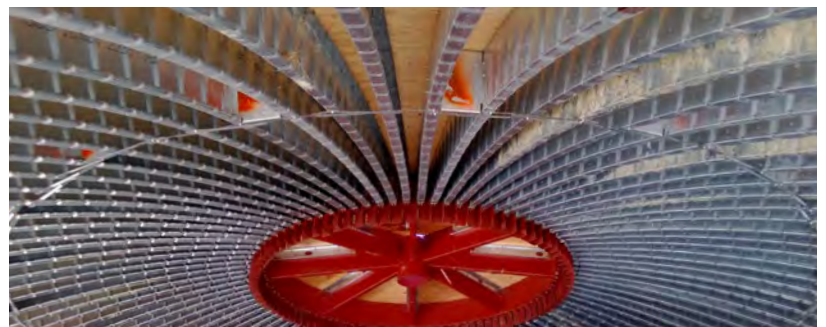
Architect: CJK Design Group

General Contractor: St. George Orthodox Christian Church

Sub Contractor: The Gill Company

Curved Framing/Dome Solution Provider: Radius Track Corporation

CJK Design Group made a grand statement incorporating a large dome into the design of St. George Orthodox Christian Church. High in the sky, the dome rests on a ring of windows that fills the space with daylight.



Curved-Right® pre-curved dome ribs provided the perfectly formed curves for the finish surface that served as the artists' canvas.



St. George Orthodox
Christian Church -
Exterior Domes
Fishers, IN

Image by Phillip Liptak



Exterior Dome of Orthodox Church Raised to Fanfare

Architect: CJK Design Group

General Contractor: St. George Orthodox Christian Church

Sub Contractor: The Gill Company

Curved Framing/Dome Solution Provider: Radius Track Corporation

The Gill Company raised this forty foot wide dome to its perch fifty-four feet above the finished floor of St. George Orthodox Christian Church designed by CJK Design Group.

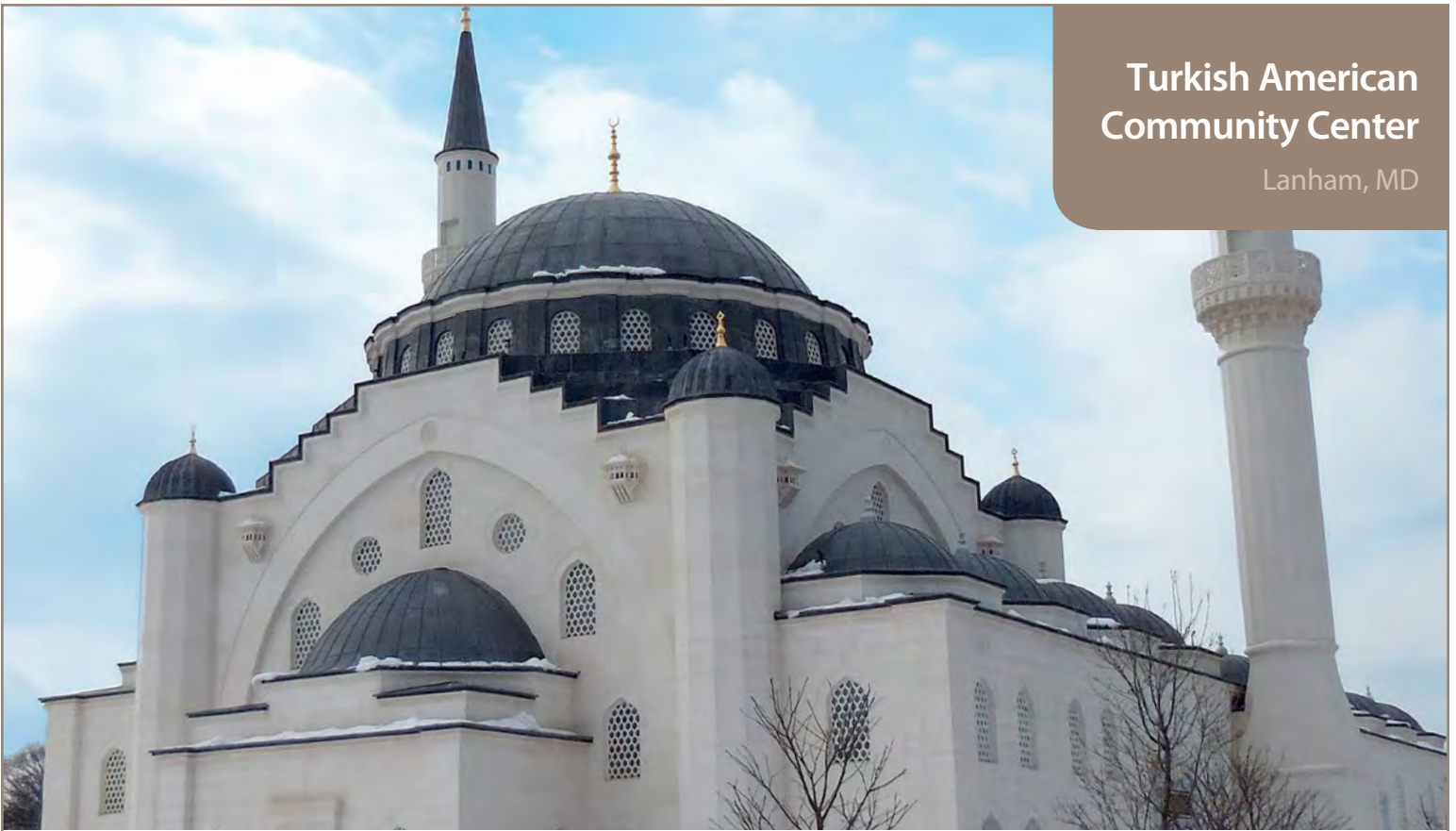


Our Curved-Right® Dome solution with pre-curved dome ribs arrived at the job site precisely curved, cut and labeled to match installation documents for an easy installation.

Along with the dome framing, the contractor ordered our pre-cut contour plywood sheathing sections that matched the rib structure of the dome and were sized exactly for that application.

Turkish American Community Center

Lanham, MD



CFS Framing Assemblies Used as Concrete Formwork for Three Large Domes

Architect: Fentress Architects

General Contractor: Balfour Beatty

Concrete Subcontractor: Facchina Construction Corporation, Inc.

Curved Dome Formwork Solution Provider: Radius Track Corporation

Considered the crowning achievement of the Turkish American Community Center, the mosque has a main dome 50'-0" above the floor. The poured concrete dome soars more than 72' in the sky and spans just over 44' from one side to the other.



Forming this lofty dome with a light weight Curved-Right® Dome Formwork assembly made short, safe, work of the job. The Radius Track Team designed and fabricated cold-formed steel (CFS) framing for the large mosque dome and the 2 bathhouse domes.



The light weight of the CFS framed dome formwork assembly allowed them to build the 3 forms on the ground and hoist each into place with a crane. The concrete subcontractor estimated this saved almost one month of schedule.

St. Andrew Orthodox Christian Church

Riverside, CA



Light Filled Domes Symbolize Heaven at Saint Andrew Orthodox Church

Architect: CJK Design Group

General Contractor: The Gill Company

Sub Contractor: Hillcrest Framing Inc.

Curved Framing/Dome Solution Provider: Radius Track Corporation

Designed by CJK Design Group, St. Andrew Orthodox Church is constructed with 7 distinct light filled domes, 74 arches, 14 barrel vaults, 16 groin vaults, 8 inverted convex ceiling domes and a soaring central dome.



Curved-Right® pre-curved track and studs by Radius Track® guaranteed precise and predictable results during the framing of this new church whose design was inspired by 6th century orthodox churches.



The contractor commented that the use of Curved-Right® custom framing profiles likely saved him seven full weeks of labor.

Interfaith Peace Chapel Cathedral of Hope

Dallas, TX



Interfaith Peace Chapel Cathedral of Hope, United Church of Christ

Architect: Philip Johnson – Alan Ritchie Architects and
Cunningham Architects

Structural Engineer: Thornton Tomasetti

Consulting Structural Engineer: THH Inc.

Contractor: Lasco

Curved Framing Solution Provider: Radius Track Corporation

The Interfaith Peach Chapel was designed by Philip Johnson, FAIA, to serve as the cornerstone of the Cathedral of Hope's campus. Innovative framing designs were created for the chapel's unique wall surfaces that warp and curve.



Interior surfaces warped and curved differently than the exterior surfaces. Curved-Right® pre-curved framing by Radius Track® provided a tough, flexible dual framing system for the chapel's walls, sometimes 3 foot thick.



The "cousin framing," co-designed, uses a modified clip system to connect both interior and exterior walls to the steel structure and provides strength against the Texas winds.